



Experience Purdue's College of Technology

- A world-class education close to home and work
- Degree programs in response to current and projected workforce needs within the region
- Identical curriculum requirements to the West Lafayette campus programs
- Highly qualified Purdue faculty with business and industry experience
- Low student-to-faculty ratio
- Access to cutting-edge technology

With locations across Indiana, Purdue's College of Technology is uniquely positioned to assist individuals with their educational and career aspirations, as well as business and industry with workforce training and technical needs.

In New Albany, Purdue's College of Technology offers the regional community five technology bachelor's degree programs — computer graphics technology, electrical engineering technology, industrial technology, mechanical engineering technology, and organizational leadership and supervision. A degree in one of these programs puts graduates at the forefront of today's technological advances and helps them become leaders in their chosen career paths.

In addition, Purdue's College of Technology at New Albany serves as a key contact to area business and industry for customized training, technical support, and applied research assistance through Purdue University.

We are here to serve southeast Indiana and greater Louisville and would welcome the opportunity to talk with you about your career objectives or to your business about the many services that Purdue University brings to the region.

Sincerely,
Andy Schaffer, director

ABOUT THE COLLEGE OF TECHNOLOGY AT NEW ALBANY

Location

Purdue University's College of Technology at New Albany is located at the Purdue Technology Center of Southeast Indiana, at the southeast corner of the I-265 and Charlestown Road interchange in New Albany. Classes are offered at this location and on the campus of Indiana University Southeast on Grant Line Road.

History

Purdue's College of Technology established a presence in New Albany in 1968, initially offering an associate in applied science degree in mechanical engineering technology.

Faculty

Purdue technical courses are taught by full-time Purdue faculty and Purdue-approved adjunct faculty. All faculty members come equipped with years of work experience in addition to their academic credentials.

Students

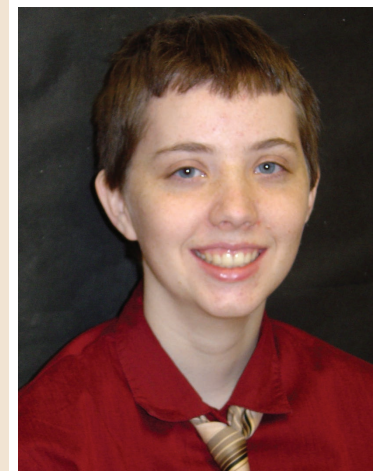
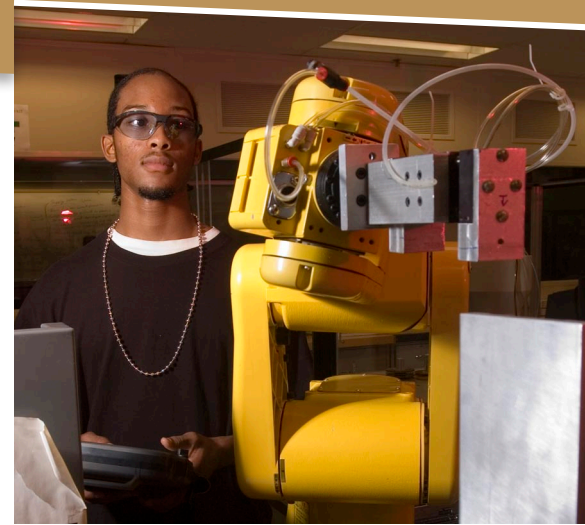
More than 215 students attend the College of Technology at New Albany. The diverse student body represents residents from southeast Indiana, greater Louisville, and other surrounding counties.

Course Delivery

Most classes include a mix of lecture, laboratory work, and individual and group project work. A limited number of online classes are available.

Facilities

Students attend classes alongside approximately 7,000 students on the Indiana University Southeast campus. Purdue and IUS computer labs offer a variety of hardware, software, and personal support services. IU Southeast's new student housing is available to Purdue New Albany students (students are responsible for their own transportation).



"In the seventh grade, when I saw Toy Story, I knew I wanted to do computer animation. Through careful research I found that Purdue University College of Technology at New Albany was the best choice for me; a world-renowned university close to home with faculty and graduates working in the industry with companies like Pixar, Industrial Light and Magic, and Wal-Mart Corporate E-learning."

Loren Cline
computer graphics
technology major

Local Purdue Degree Offerings

Computer Graphics Technology (BS degree)

What You Learn: Discover creative and management aspects of computer graphics production. Work collaboratively in computer labs to master techniques, concepts, and management skills.

Job Titles: Animator, Architectural Illustrator, Computer Game Developer, Design Engineer, Graphic Consultant, Multimedia Developer, Web Developer, Visual Designer

Average Starting Salary: \$40,909*

Local Employers of Alumni: ProMedia, Louisville Technical Institute, Bruce Fox, Inc., Amatrol

Electrical Engineering Technology (BS degree)

What You Learn: Gain a strong foundation in electronics through hands-on, lab-based experiences, while focusing on one or two areas of interest that correlate to workforce demands within business and industry.

Job Titles: Applications Engineer, Controls Engineer, Design Engineer, Electrical Engineer, Manufacturing Engineer, Systems Analyst, Systems Developer, Test Engineer

Average Starting Salary: \$52,267*

Local Employers of Alumni: UPS (United Parcel Services), Sprint Telecommunications, Amatrol, Samtec

Industrial Technology (BS degree)

What You Learn: Gain a broad perspective on manufacturing and management topics, and position yourself for a career within a wide range of technical and/or managerial positions in business, industry, and government

Job Titles: Facilities Planner, Industrial Engineer, Manufacturing Engineer, Production Manager, Production/Process Planner, Quality Assurance Engineer, Safety System Specialist, Technical Manager

Average Starting Salary: \$46,509*

Local Employers of Alumni: New Program

Mechanical Engineering Technology (BS degree)

What You Learn: Solve mechanical problems and gain insights into the manufacturing production and design process through the application of engineering principles.

Job Titles: Design Engineer, Development Engineer, Manufacturing Engineer, Mechanical Engineer, Process Engineer, Product Design Engineer, Production Supervisor, Tooling Engineer, Quality Engineer

Average Starting Salary: \$49,186*

Local Employers of Alumni: Nibco Inc., Hitachi Cable, Zoeller Company, Samtec

Organizational Leadership and Supervision (Certificate and BS degree)

What You Learn: Prepare yourself for contemporary management through this practical, people-oriented approach to leadership.

Job Titles: Customer Relations Manager, Financial Planner, Human Resources Manager, Manufacturing Supervisor, Project Manager, Sales Representative, Supervisor, Operations Manager

Average Starting Salary: \$42,882*

Local Employers of Alumni: Pepsi Americas, General Electric

* Average starting salaries are based on graduates with a bachelor's degree.



ADMISSIONS

Purdue College of Technology students in New Albany are admitted directly into, and are a part of, the Purdue University College of Technology in West Lafayette. Your acceptance as a new student is influenced by many factors. Admission to the New Albany location generally is governed by the same criteria applied to students seeking admission to the West Lafayette campus. Contact the student services coordinator at New Albany to discuss your educational goals and interests and the opportunities available for you through the College of Technology at New Albany.

STUDENT SERVICES

To discuss your educational options at Purdue University or to register for the upcoming semester, contact:

Christy A. Snip
 Student Services Coordinator
 technewalbany@purdue.edu
 (812) 206-8381

TUITION

Fees are charged per credit hour and follow the structure of IU Southeast.

KENTUCKY RESIDENTS

Kentucky residents of Jefferson, Oldham, Trimble, and Bullitt counties pay Indiana in-state tuition rates at Purdue's New Albany location.

DEGREES

Purdue University degrees and credits are earned at all College of Technology statewide locations. Curriculum requirements are identical to the West Lafayette campus, and Purdue credentialed faculty members teach all courses.

FINANCIAL AID

Financial aid information and applications, including local scholarship information, can be obtained through the Student Services office at New Albany. All administration of financial aid is handled through the West Lafayette Campus Financial Aid office. The FAFSA university code for Purdue is 001825.

CORPORATE SERVICES

To find out more about services provided by the college to regional business and industry, contact:

Andy Schaffer, PhD
 Director
 College of Technology at New Albany
 aschaffe@purdue.edu
 (812) 206-8382

Another Purdue Resource

A Purdue resource in your community and all 92 Indiana counties is the Purdue University Cooperative Extension Service. Local Purdue Extension staff can provide you with programs and resources on entrepreneurship, family, youth, natural resources, agriculture, and community development.

In Floyd County:

Call: (812) 948-5470
 Toll-free: (888) EXT-INFO
 E-mail: floydces@purdue.edu

In Clark County:

Call: (812) 256-4591
 Toll-free: (888) EXT-INFO
 E-mail: clarkces@purdue.edu

Earn Your Purdue Degree



In New Albany

Build a great career,
 While staying close to home,
 Where you can save a lot of money,
 While earning a respected degree,
 From a Big Ten school.

PURDUE
 UNIVERSITY



COLLEGE OF TECHNOLOGY
 at New Albany

www.purdue.edu/tech/newalbany

EA/EOU
 1717108d1

PURDUE
 UNIVERSITY



COLLEGE OF TECHNOLOGY
 at New Albany